

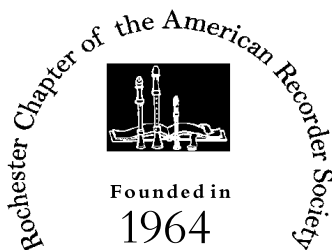
Rochester Chapter of the American Recorder Society

2006 - 2007 Season

Join us . . .

. . . for our 42nd season of recorder music making, and enjoy a musical heritage spanning more than a thousand years. New members with any level of playing skill are most welcome. The

Chapter is known for its beginner classes that provide a rewarding experience for those playing music, or recorder, for the first time. More advanced classes and consorts give experienced players an opportunity to improve their skills.



Chapter Information

We meet regularly on the second and fourth Tuesdays of each month from 7:15 to 9:45 pm, September to May. First-hour classes are devoted to improvement of technique with classes at different skill levels. A half-hour break allows time for some sociability, a short business meeting and a mini-concert. Second-hour sessions emphasize consort playing in small groups focused on a particular period or type of music. In December we will have an informal holiday gig and party (many bring chocolate!) and in May, the Chapter holds a semi-formal concert that is open to family, friends and anyone else interested in recorder music.

At our first meeting, dues are collected for our chapter which pay for rehearsal space, the newsletter and our website. We also pay for the music we use in our classes. If you wish to join or renew your membership in the National ARS, registration forms will be available. The Chapter organizes a workshop in the spring for an additional fee.

First Meeting

Our first meeting begins with registration at 7:15 pm on September 12th, 2005 at the First Baptist Church of Rochester, 175 Allens Creek Road. The church is at the corner of Allens Creek Road and Clover Street, convenient to 590.

The meeting starts with registration and continues with playing sessions. During registration you can preview the music for each class and consort, meet with teachers and leaders, and decide on the best choices for you. See the class listings at the right.



We Need Your Help

If you have a copy of "Renaissance Songs and Dances" by Erich Katz that you can lend or sell to the chapter, please call Pat Hanley, 482-9314. We need additional copies for the mid-intermediate class, and it is out of print.

Message from the President

The start of our 42nd year as the Rochester Chapter of the American Recorder Society is nearly here and I hope you are planning on being with us. As you can see by this newsletter, the board has a great deal of planning in place to make this year interesting and enjoyable for recorder players at all levels, from beginners to advanced. We have a wide variety of classes and teachers; fall and spring workshops, and several opportunities to celebrate along the way.

I am happy to say that this is our third year "back" at the First Baptist Church, where there is plenty of space for our expanded programs. All the rooms are on one floor and the parking is convenient.

Please join us on Tuesday evening, September 12, at 7:15 pm, for registration night. I look forward to seeing you!

David Tilley

Our Music Library

The Rochester Chapter Music Library is now on-line at our Web Site, [www.ggw.org/RochARS/library.html]. It contains a listing of about 1100 pieces of sheet music! Many are out-of-print.

Each piece has a difficulty rating of Easy, Medium or Difficult. The pieces are sorted according to the number of parts. If you are interested in any, please contact me.

Enjoy!

Ellen Brannin, Librarian
brannins@frontiernet.net
585-336-7219

Class Choices for 2006-07

First-Hour Classes

Beginning Recorder

Frank Amato, 225-6808 (meets each week)

Low Intermediate

Liz Seely, 473-1463

Mid-Intermediate

Pat Hanley, 482-9314

High Intermediate

David Tilley, 259-5583

Advanced

Jean Cronin, 544-5451

Second-Hour Consorts

Music For Enjoyment

Liz Seely, 473-1463

Fantasias

Pat Hanley, 482-9314

Recorders and Other Instruments

David Tilley, 259-5583

Performance Consort

Jean Cronin, 544-5451
(permission of coach required)

First & Third Tuesdays

Sight-reading class

Rotating teachers

Sign up as a permanent member during registration, or for single sessions at our regular meetings.

Visit us at our web site
<http://www.ggw.org/RochARS/>

Save the Date!

November 4, 2006

Our third annual in-chapter workshop

Plan to join us for a morning of
music and refreshments!

Design Contest!

Attention artists! Create your best design for a T-shirt or totebag for our chapter. We'll have an art show and judge the results at our fall workshop. Guidelines for the art will be announced at our meetings and on our website.

Board Members 2006-2007

President – *David Tilley*
Secretary/Webmaster – *Katy Mulvey*
Treasurer – *Marian Henry*
Teacher Coordinators – *Neil & Liz Seely*
Publicity – *Stephanie Sher*
Librarian – *Ellen Brannin*
Concert Coordinator – *Marina Schubert*
Workshop Coordinator – *John Heyer*
Hospitality – *Paul Breese-Garelick*
Martha Coordinator – *Pat Hanley*



Calendar

September

12 Registration night
19 beginners' class, sight-reading class
26 regular chapter meeting

October

3 beginners' class, sight-reading class
10 regular chapter meeting
17 beginners' class, sight-reading class
24 regular chapter meeting

November

4 Fall workshop
7 beginners' class, sight-reading class
14 regular chapter meeting
21 beginners' class, sight-reading class
28 regular chapter meeting

December

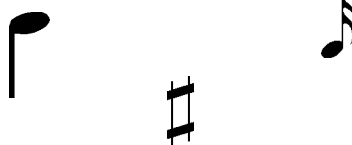
5 beginners' class, sight-reading class
12 all-chapter Winter Gathering

January

9 regular chapter meeting
16 beginners' class, sight-reading class
23 regular chapter meeting
30 beginners' class, sight-reading class

February

6 beginners' class, sight-reading class
13 regular chapter meeting
20 beginners' class, sight-reading class
27 regular chapter meeting



March

6 beginners' class, sight-reading class
13 regular chapter meeting
20 beginners' class, sight-reading class
27 regular chapter meeting

April

3 beginners' class, sight-reading class
10 regular chapter meeting
17 beginners' class, sight-reading class
24 regular chapter meeting

May

1 beginners' class, sight-reading class
8 regular chapter meeting
15 **additional regular chapter meeting**
20 Spring concert

Regular chapter meetings begin at 7:15 pm.

Help us reduce our costs!
If you'd like to receive this newsletter by email only, send
our secretary a message at katy@mulveyfamily.com