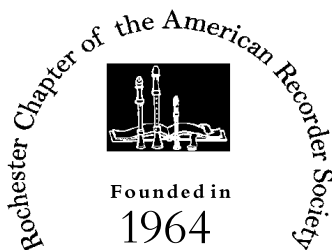


# Rochester Chapter of the American Recorder Society

## 2005 - 2006 Season

### Join us . . .

. . .for our 41st season of recorder music making, and enjoy a musical heritage spanning more than a thousand years. New members with any level of playing skill are most welcome. The Chapter is known for its beginner classes that provide a rewarding experience for those playing music, or recorder, for the first time. More advanced classes and consorts give experienced players an opportunity to improve their skills.



### Chapter Information

We meet regularly on the second and fourth Tuesday of each month from 7:15 to 9:45 pm, September to May. First hour classes are devoted to improvement of technique with classes at different skill levels. A half-hour break allows time for some sociability, a short business meeting and a mini-concert. Second hour sessions emphasize consort playing in small groups focused on a particular period or type of music. In December we will have an informal holiday gig and party (many bring chocolate!) and in May, the Chapter holds a semi-formal concert that is open to family, friends and anyone else interested in recorder music. At our first meeting, dues are collected for our chapter which pay for rehearsal space, the newsletter and our website. We also pay for the music we use in our classes. If you wish to join or renew your membership in the National ARS, registration forms will be available. The Chapter organizes a workshop in the spring for an additional fee.

### First Meeting

Doors open for our first meeting at 7:00 pm on September 13th, 2005 at the First Baptist Church of Rochester, 175 Allens Creek Road. The church is at the corner of Allens Creek Road and Clover Street, convenient to 590.

The meeting starts with registration and continues with playing sessions. During registration you can preview the music for each class and consort, meet with teachers and leaders, and decide on the best choices for you. See the class listings at the right.



### A Note About Construction

The Clover Street bridge over Allens Creek (just north of the Allens Creek intersection) is currently being replaced, and the road is closed. Please allow additional time if that is your usual route. Construction is scheduled to be completed in October.



### Message from the President

The start of our 41<sup>st</sup> year as the Rochester Chapter of the American Recorder Society is nearly upon us and I hope you are planning on being with us. As you can see by this newsletter, the board has a great deal of planning in place to make this year interesting and enjoyable for recorder players at all levels, from beginners to advanced. We have a wider variety of classes, several new teachers, fall and spring workshops and several opportunities to celebrate along the way.

I am happy to say that this is our second year "back" at the First Baptist Church, where there is plenty of space for our expanded programs. All the rooms are on one floor and the parking is convenient.

Please join us on Tuesday evening, September 13, at 7:15 pm, for registration night. I look forward to seeing you!

*David Tilley*

### Our Music Library

The Rochester Chapter Music Library is now on-line at our Web Site, [[www.ggw.org/RochARS/library.html](http://www.ggw.org/RochARS/library.html)]. It contains a listing of about 1100 pieces of sheet music! Many are out-of-print.

I have given each piece a difficulty rating of Easy, Medium or Difficult. The pieces are sorted according to the number of parts. If you are interested in any, please contact me. Enjoy!

*Ellie Chaffee*, Librarian  
kaycee60@aol.com  
585-265-0971

### Class Choices for 2005-06

#### First-Hour Classes

##### Beginning Recorder

Frank Amato, 225-6808 (meets each week)

##### Low Intermediate

Liz Seely, 473-1463

##### Mid-Intermediate

Pat Hanley, 482-9314

##### High Intermediate

David Tilley, 259-5583

#### Techniques for Playing Stan Davis Arrangements

Neil Seely, 473-1463

##### Advanced

Jean Cronin, 544-5451

#### Second-Hour Consorts

##### Fun with Ensemble Music

Liz Seely, 473-1463

#### Medieval and Early Renaissance Music

Marian Henry, 227-2373

##### Musical Potpourri

Stan Gross, 256-9906

##### Performance Consort

Jean Cronin, 544-5451  
(permission of coach required)

#### First & Third Tuesdays

##### Sight-reading class

Rotating teachers

Sign up as a "permanant" member during registration, or for single sessions at our regular meetings.

**Rochester Chapter American Recorder Society**  
**59 Shirewood Drive**  
**Rochester, NY 14625-2130**

**Board Members:**

President – *David Tilley*  
Secretary – *Katy Mulvey*  
Treasurer – *Marian Henry*  
Teacher Coordinators – *Neil & Liz Seely*  
Publicity – *Tom Mangialino*  
Librarian – *Ellie Chaffee*  
Concert Coordinator – *Sarah Singal / Mary Jones*  
Workshop Coordinator – *John Heyer*  
Hospitality – *Inge Barta*  
Martha Coordinator – *Pat Hanley*

Visit us at our web site  
<http://www.ggw.org/RochARS/>

**Music With Martha!**



Martha Bixler, past president of the ARS, workshop leader, and all-round great teacher will again be joining us this year from New York City, in September and December. She is willing and very able to assist beginners through advanced players increase their enjoyment of the recorder. Lessons will be available, and there will be a mini-workshop with her on Saturday, September 17 and Saturday, December 3.

**Save the Date!**

**November 5, 2005**

Our second annual in-chapter workshop

Plan to join us for a morning of  
music and refreshments!

Coming October 11<sup>th</sup> . . .

. . . the Kilbourn Concert Series presents *Lionheart*  
with a program of English music from the time of Henry VIII.

**Concert at 8 pm, Kilbourn Hall.**

**Calendar**

**September**

- 13 first meeting
- 17 Mini-workshop with Martha Bixler
- 20 beginner's class, sight-reading class
- 27 regular chapter meeting

**October**

- 4 beginner's class, sight-reading class
- 11 regular chapter meeting
- 18 beginner's class, sight-reading class
- 25 regular chapter meeting, board meeting

**November**

- 1 beginner's class, sight-reading class
- 5 Fall workshop
- 8 regular chapter meeting
- 15 beginner's class, sight-reading class
- 22 regular chapter meeting
- 29 beginner's class, board meeting

**December**

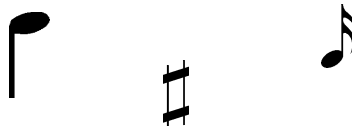
- 3 Mini-workshop with Martha Bixler
- 6 beginner's class, sight-reading class
- 13 All-chapter holiday gathering

**January**

- 10 regular chapter meeting
- 17 beginner's class, sight-reading class
- 24 regular chapter meeting
- 31 beginner's class

**February**

- 7 beginner's class, sight-reading class
- 14 regular chapter meeting
- 21 beginner's class, sight-reading class
- 28 regular chapter meeting



**March**

- 7 beginner's class, sight-reading class
- 14 regular chapter meeting
- 21 beginner's class, sight-reading class
- 28 regular chapter meeting

**April**

- 4 beginner's class, sight-reading class
- 11 regular chapter meeting
- 18 beginner's class, sight-reading class
- 25 regular chapter meeting

**May**

- 2 beginner's class, sight-reading class
- 9 regular chapter meeting
- 16 beginner's class, sight-reading class
- 21 Spring concert

*Help us reduce our costs!*

*If you'd like to receive this newsletter by email only, send  
our secretary a message at [katy@mulveyfamily.com](mailto:katy@mulveyfamily.com)*